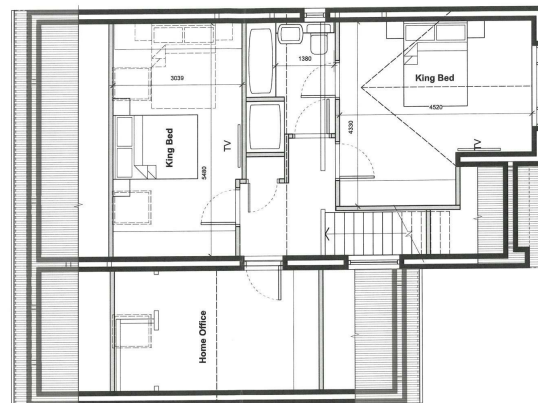
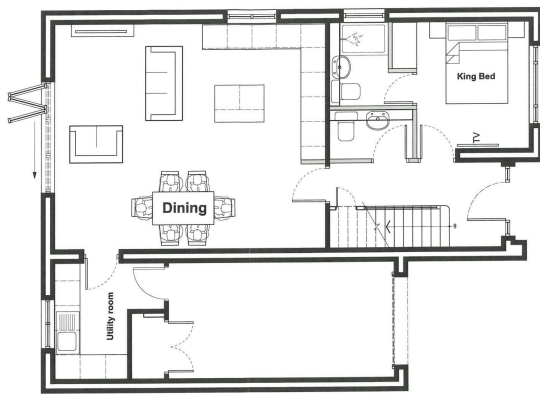




## Plot 3 Christopher Rise (No. 4 Clos William), Pontlliw, Swansea, SA4 9FJ

£395,000

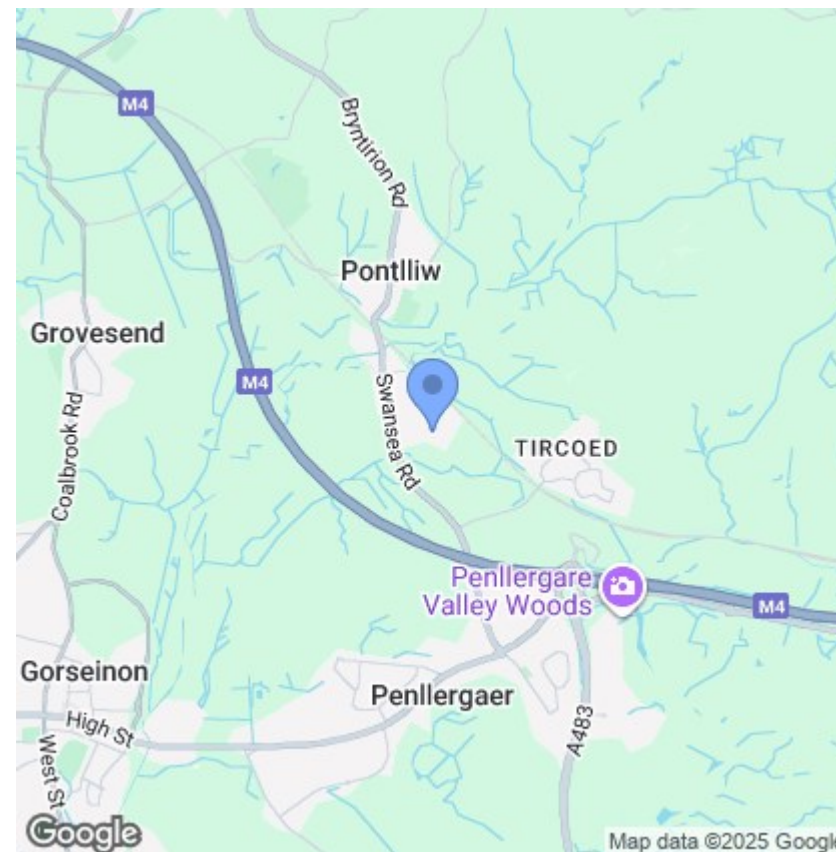
- POPULAR LOCATION
- VERSATILE ACCOMMODATION
- 3/4 BEDROOMS
- EPC - B
- ESTABLISHED, HISTORICAL RESIDENTIAL AREA
- SCOPE FOR SINGLE STOREY LIVING
- STUDY
- NEW BUILD
- GARAGE & DRIVEWAY PARKING
- BI-FOLD DOORS AT REAR



## Description

Currently under construction and available for reservation, we are pleased to offer this 3/4 bedroom home in this popular, established, residential area. The accommodation is set over two floors and is extremely versatile with single storey living possible if needed.

Vendor advises a JKW eradication programme is in place. Further details available.



## Directions

Postcode for SATNAV: SA4 9FJ

## Viewings

Viewings by arrangement only.

Call 01792 653100 to make an appointment.